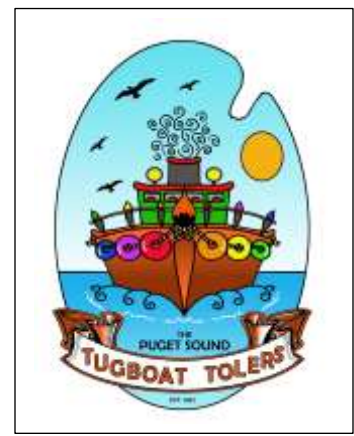


# PUGET SOUND TUGBOAT TOLERS

Newsletter March, 2019



## New Hope Church

1522 Baby Doll Rd. SE

Port Orchard

March 2<sup>nd</sup>

General Meeting

Demo by Karen Plank

April 6<sup>th</sup>

Class (TBD)

May 4<sup>th</sup>

General Meeting

Demo (TBD)

June 1<sup>st</sup>

Class – (TBD)

July 6<sup>th</sup>

General Meeting

Demo (TBD)

August 3<sup>rd</sup>

Class – (TBD)

August 24<sup>th</sup> & 25<sup>th</sup> :

Shara Reiner

Port Orchard Mall

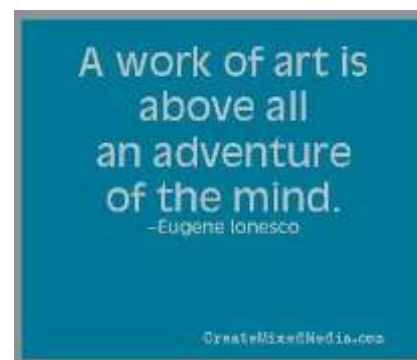
From the Prez.....

Ok, I am so done with this snow and winter in general. I've had to reschedule too many important appointments. That being said being snowed in allowed me to finish my snowflake Pam taught us, even the back and sides.....just waiting for warmer weather to spray varnish. Thanks for the great class Pam! I also want to thank whoever cleaned up the kitchen, it was much appreciated.

We voted on the upcoming classes and as soon as we can figure out who teaches when they will be posted.

I can't believe March is here, time is flying by as it seems to do as I age. I am looking forward to Karen's Demo following our General meeting at 10, then we will break for our potluck lunch and then paint away the afternoon.

*LuAnn*



# Tugboat Talk

Thanks Pam for a great class. Loved seeing everyone.

*Janie*

I loved the class with Pam, she is such a calm teacher. I like my piece too!

*Nancy Walch*

Thank you for your kind note of prayers and encouragement over the loss of my brother. No one knew just how bad his heart was, or just how many lives he touched in his short 61 years. It was a rough trip, but I felt your thoughts and prayers. Thank you,

*Monica*



## 2019 Executive Board

President	LuAnn
Vice President	Nancy Walch
Secretary	Patti
Treasurer	Vicki
Membership	Karen
Member at Large	Mert
Newsletter	LuAnn
Education	Mary Beth
Ways N Means	Patti
Sunshine	Judy
Website	Monica



# March News & Happenings

At our meeting in February as a group we decided for our seminar with Shara Reiner to paint #1 a black bucket with hearts and #2 Merry Everyday projects. The cost will be \$135.00 for the two day seminar in August 24th and 25th the class will be at the Port Orchard mall where we met for a time last year. I will start taking payment and sign ups at our March meeting I would like our club to have first chance at attending before we offer to other organizations in our area to meet the minimum number of students required.

I also received information that Georgia Magarrell would like to teach a one day class in July (which could be our meeting day) of preparation and painting of holiday silverware ornaments. Georgia will provide silverware ornaments, patterns, instructions, photographs and paint for each student. In the class the lessons will begin with line work, base coating and how the silverware is bent. You will be able to paint three different designs in the class. The cost will be \$40.00 only supplies you need to provide are normal painting supplies. We need a minimum of 15 students. Again I would like to begin a sign up and collect the money for the one day seminar at our March meeting. This appears to be a fun class with no prep prior to the class, hope all of you will be able to participate with these seminars.

Thank you,

Mary Beth

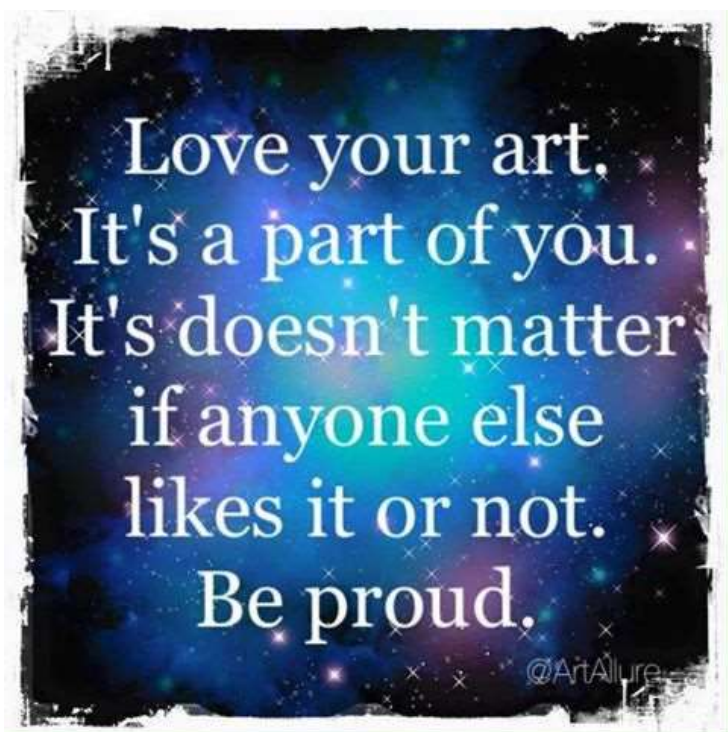


- 4<sup>th</sup> Janie Sevela
- 12<sup>th</sup> Lorri Andrews
- 20<sup>th</sup> Cyndy Abramson
- 20<sup>th</sup> Bud Golitz
- 21<sup>st</sup> Helen Wyrich
- 31<sup>st</sup> Georgia Magarrell



## SCHARFF BRUSH ORDER

Patti will be submitting a brush order soon. See Patti for catalog and order form.



To join or renew your membership with Puget Sound Tugboat Toler fill out form below and email or mail to 2018 membership chairperson Karen Plank. Applications will also be available to fill out at meetings.



## Puget Sound Tugboat Toler Membership Application

Annual Dues: Individual \$12—Seniors (62+) \$6  
—Teacher \$15—Business \$20

**\*\*Make check payable to Tugboat Toler\*\***

Membership dues are due Oct 1<sup>st</sup> & become delinquent Nov 1<sup>st</sup>

Name: \_\_\_\_\_ Spouse: \_\_\_\_\_

Address: \_\_\_\_\_

Phone: \_\_\_\_\_ (home) \_\_\_\_\_ (cell)

Email: \_\_\_\_\_ Birthdate: \_\_\_\_\_

Other Chapter Affiliations: \_\_\_\_\_

SPD membership number: \_\_\_\_\_

Membership is January 1<sup>st</sup> to December 31<sup>st</sup>

Bring this form, check/cash and a copy of your SDP membership card to the next meeting or contact:

PSTBT Membership : Karen Plank  
13928 Hillcrest St, Poulsbo WA 98370  
[valleysewing@aol.com](mailto:valleysewing@aol.com)



Visit our Website  
[www.tugboattolers.org](http://www.tugboattolers.org)

