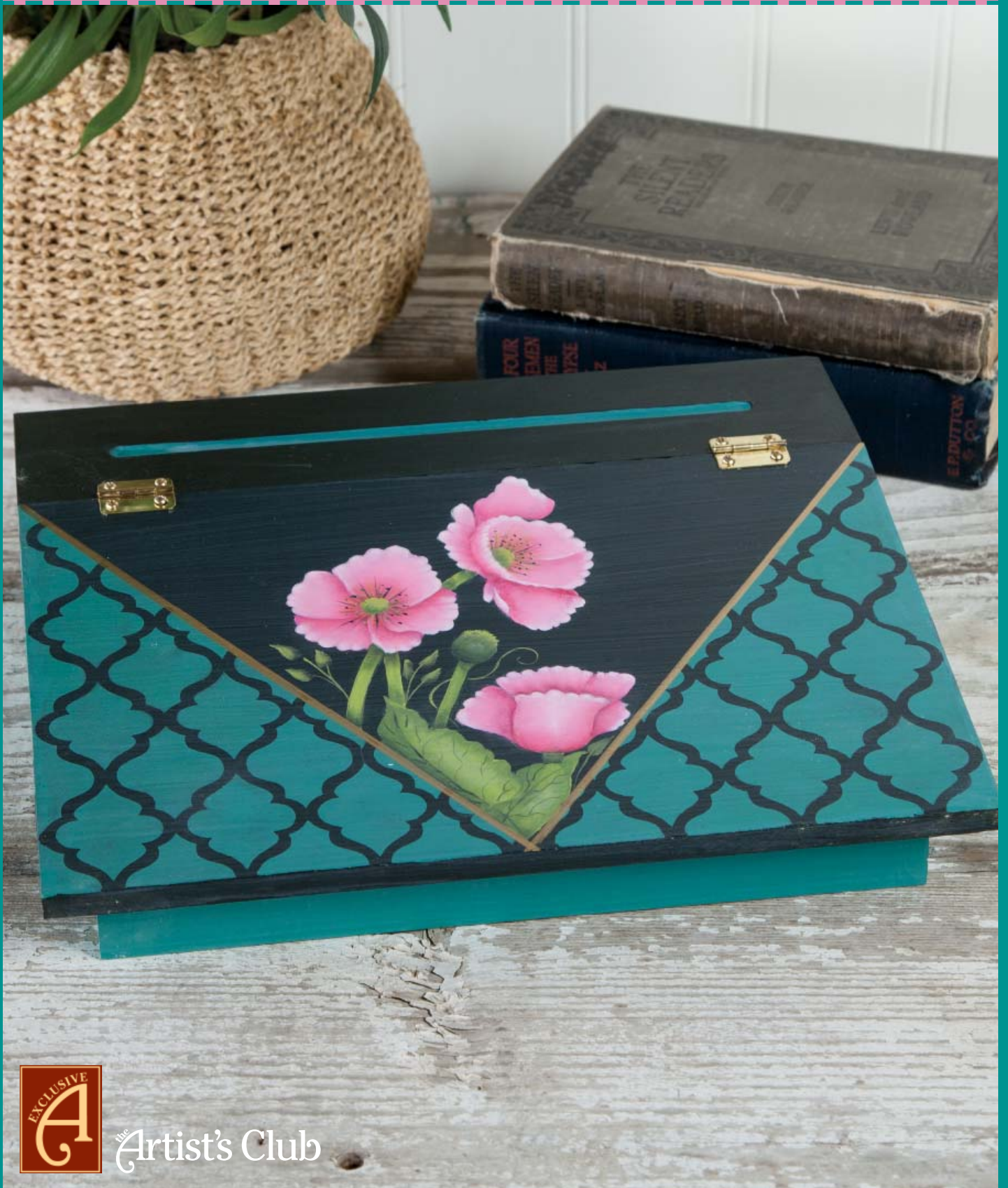


Pretty Pink Poppies

by Margaret Wilson



The Artist's Club

Pretty Pink Poppies

By Margaret Wilson

Palette:

DecoArt Americana Acrylics

Black Green #13157

Dragon Fruit #13538

Hauser Medium Green #13132

Napa Red #13165

Olive Green #13056

Snow White #13001

Teal Green #13107

Dazzling Metallics

Emperor's Gold #14069

Surface:

Lap Desk #62162

Misc. Supplies:

Americana Clear Chalkboard Coating #83211

Americana DuraClear Soft Touch Varnish #72013

Show-Offs Decorative Stencil #890202 – Available at your local craft store

Krylon 18K Gold Marker – Available at your local craft store (Optional)

Brushes:

Papillon by the Artist's Club

Glaze/Wash, size 3/4" #20102

Shader, size 8 #20129

Liner, size 1 #20147, size 10/0 #20145

Artist Inspired Brushes

Laurie Speltz Stencil Brush, 5/8" #29003

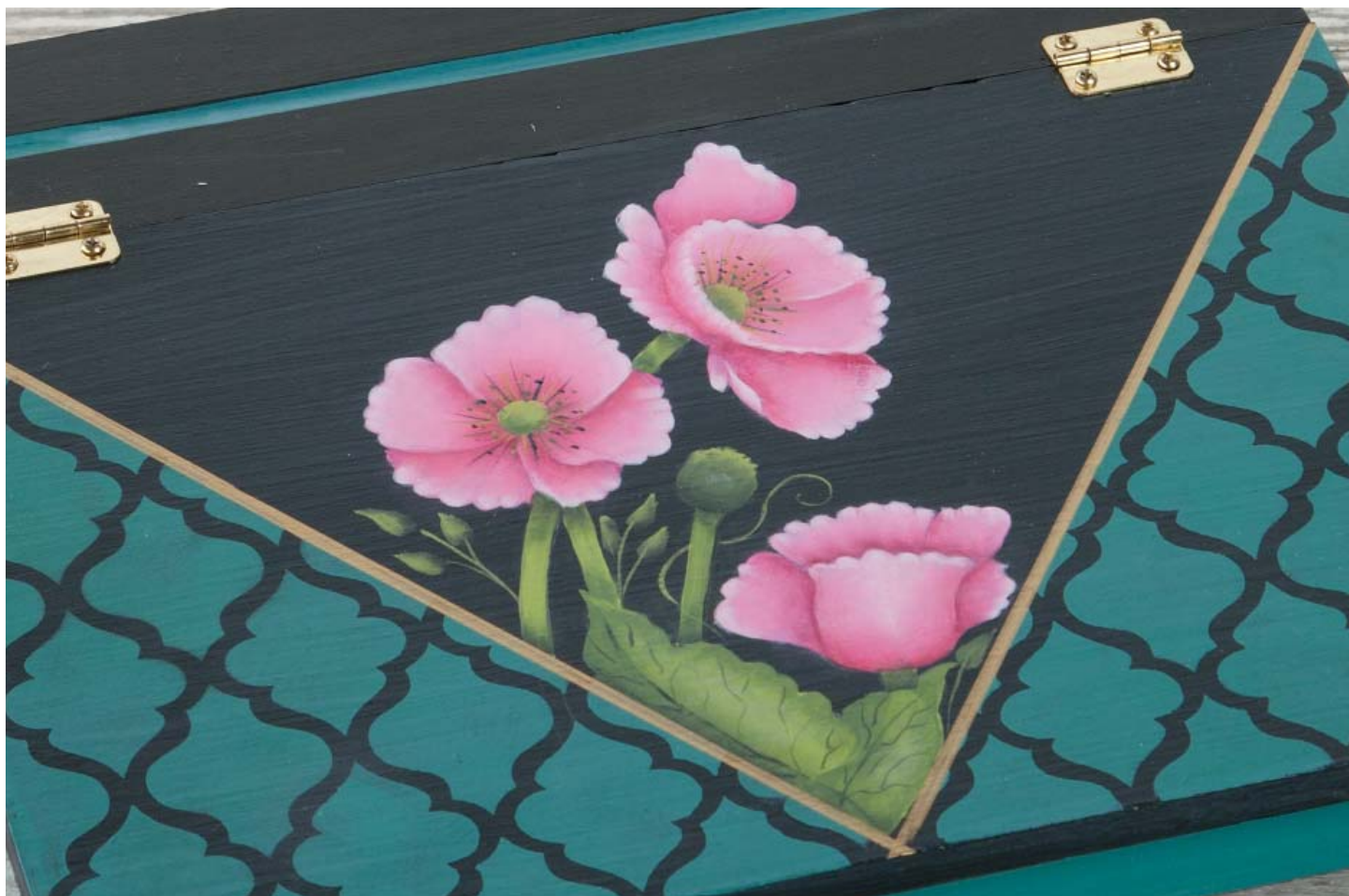
Preparation:

Sand and seal the inside and the outside of the lap desk with Americana Acrylic Spray Sealer/ Finisher - Matte. If needed, reseal and sand again. Using Black Green, basecoat the entire top of the lap desk. Base the underside of the top of the lap desk with Black Green (This underside will become the chalkboard). Using Teal Green, basecoat the remainder of the desk

Preparing for the Stenciling

Determine the middle of the desk lid. Mark this point at the bottom edge of the lid. Using painters tape, tape from the center of the left corner to the marked center of the lid. Do the same thing from the right corner of the lid. You will want your tape to run so that the large "v" is in the center of the lid. Position the bottom of the stencil along the bottom edge of the lid and using your stencil brush, gently stencil one side of the lid with Teal Green. (I placed the stencil so that the border of the stencil did not show.) Once you have finished the stenciling on one side of the lid let it dry and then do the other side. (At this point I flipped the stencil so that it would match what I had just done.) Let dry. Base in the pencil groove at the top of the box.

Transfer the main lines of the pattern.



Painting Instructions:

Dragon Fruit + White (1:1) – Using this mix base in the poppies.

Olive Green – Base in the leaves, stems and centers

Hauser Medium Green – Base in the bud.

Dragon Fruit – Using your size 8 Shader float a shade to separate the petals, around the centers and across the bottom of the poppy that doesn't show a center. Also along the bottom of the petal that is partially over the center of the poppy at the right and along the flip on the lower petal.

Napa Red – Deepen the above shade but keep it smaller.

White + the Mix that the poppies were based in (1:1) – Float a highlight along the outer edges of the petals and where one petal lies over another. Place a back to back float down the center of the front petal of the poppy without a center or drybrush the highlight down the center. Depending on the mix, this may need to be done twice.

White – Brighten the highlight above keeping it smaller

Hauser Medium Green – Float a shade wherever the stem goes under the poppies, comes from under a leaf and along the stem end of the small leaves, along the top edge of the large full leaf.

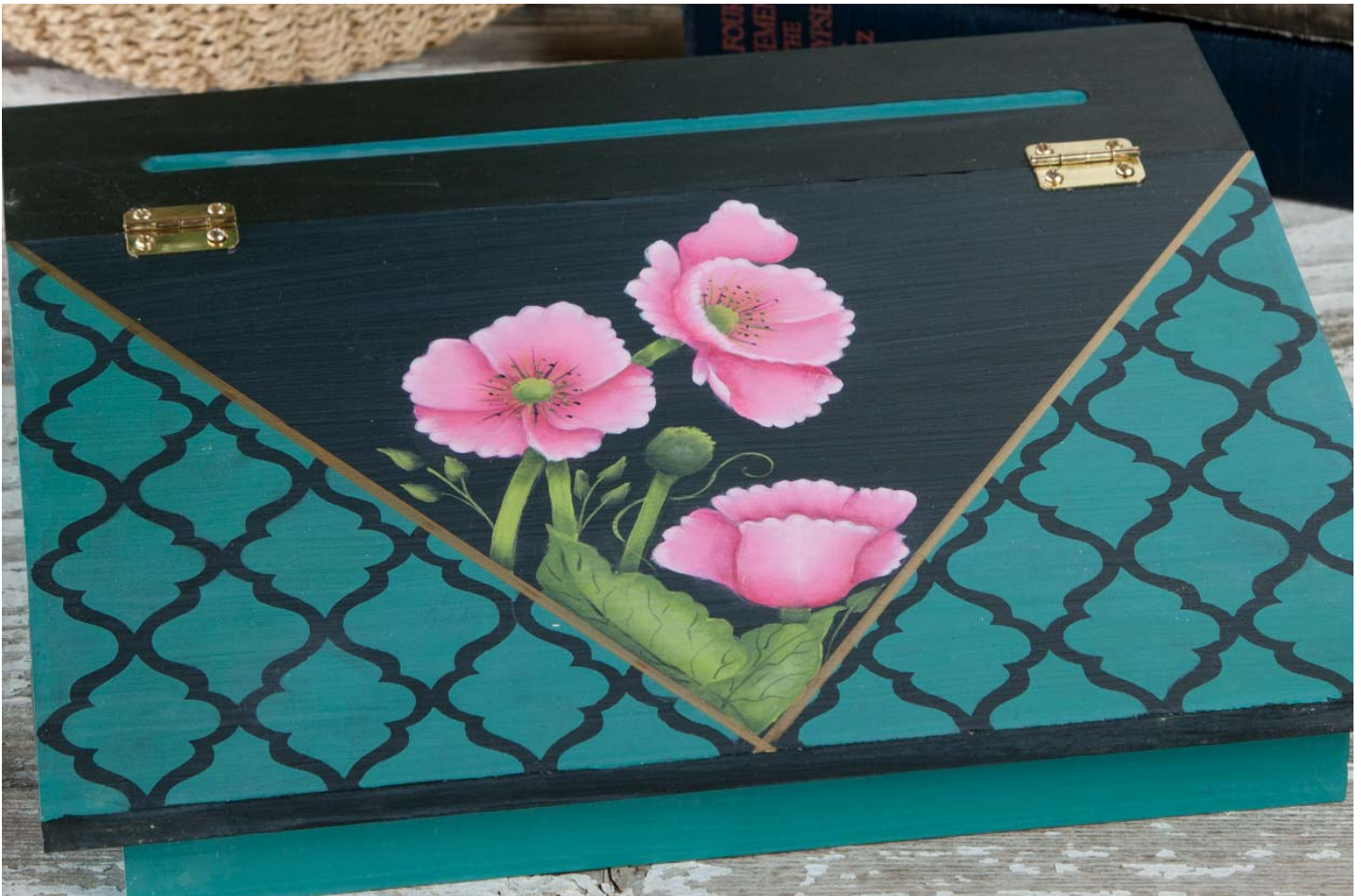
Across the bottom of the centers of the poppies.

Hauser Medium Green + a touch of Black Green – Deepen the above shade keeping it small. Add the vein lines to the large leaves.

Black Green – Float across the bottom of the bud.

Olive Green – With the tip of your liner brush add the “fuzzies” at the top of the bud. Add the tendrils.

Black Green, Hauser Medium Green, Olive Green – Using your liner pull fine lines from the centers of the poppies. I like to begin with the darkest and end with the lightest. Add a few dots of all the greens randomly along the ends of the lines.



Tape off a 1/8" stripe between the flower area and the stenciled area. Basecoat with Emperor's Gold (or the Krylon 18K Gold Marker), remove tape when dry.

The Chalkboard

Clear Chalkboard Coating - Follow the manufacturer's directions on the back of the bottle, base on the coating.

Finishing:

Finish the lap desk with Americana DuraClear Soft Touch Varnish, everywhere EXCEPT where you have applied the Clear Chalkboard Coating.

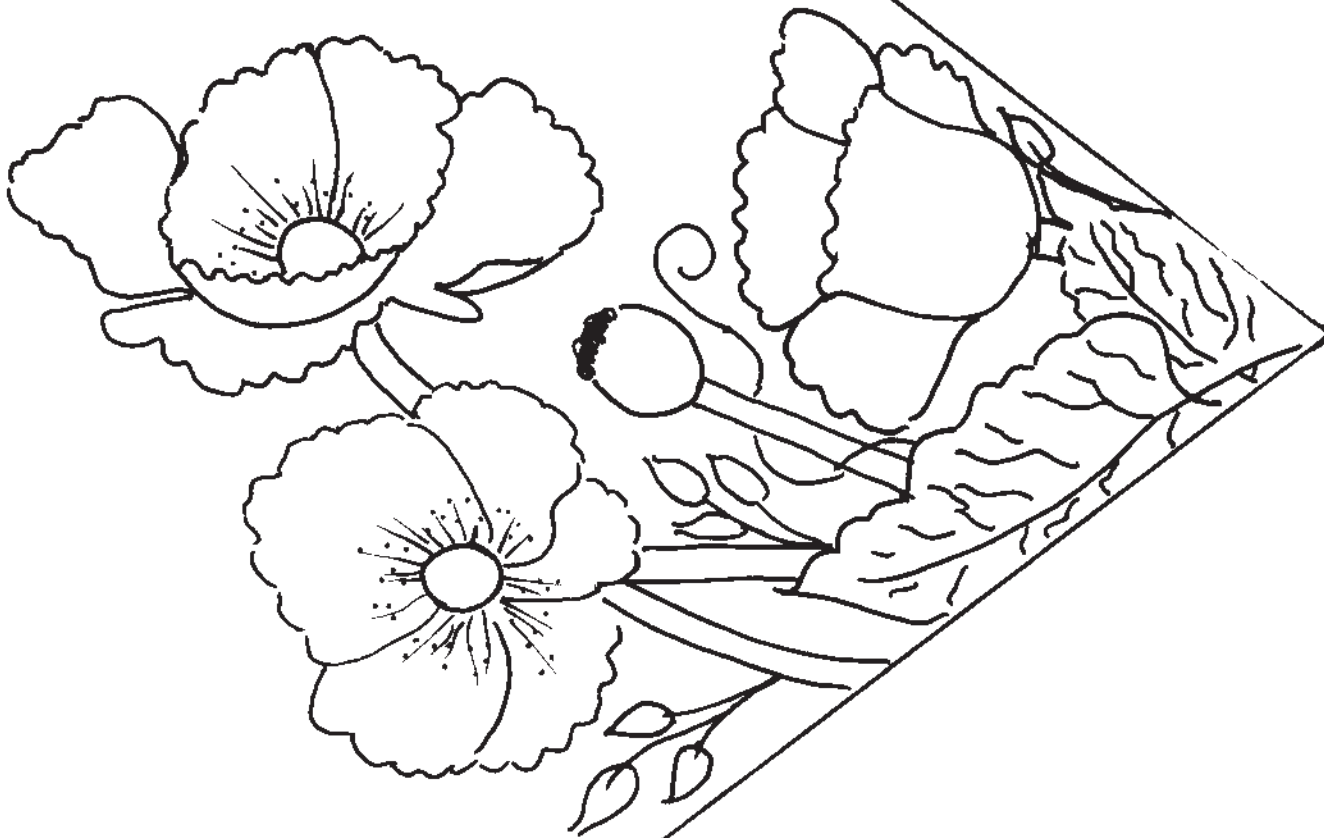
Attach the hinges.



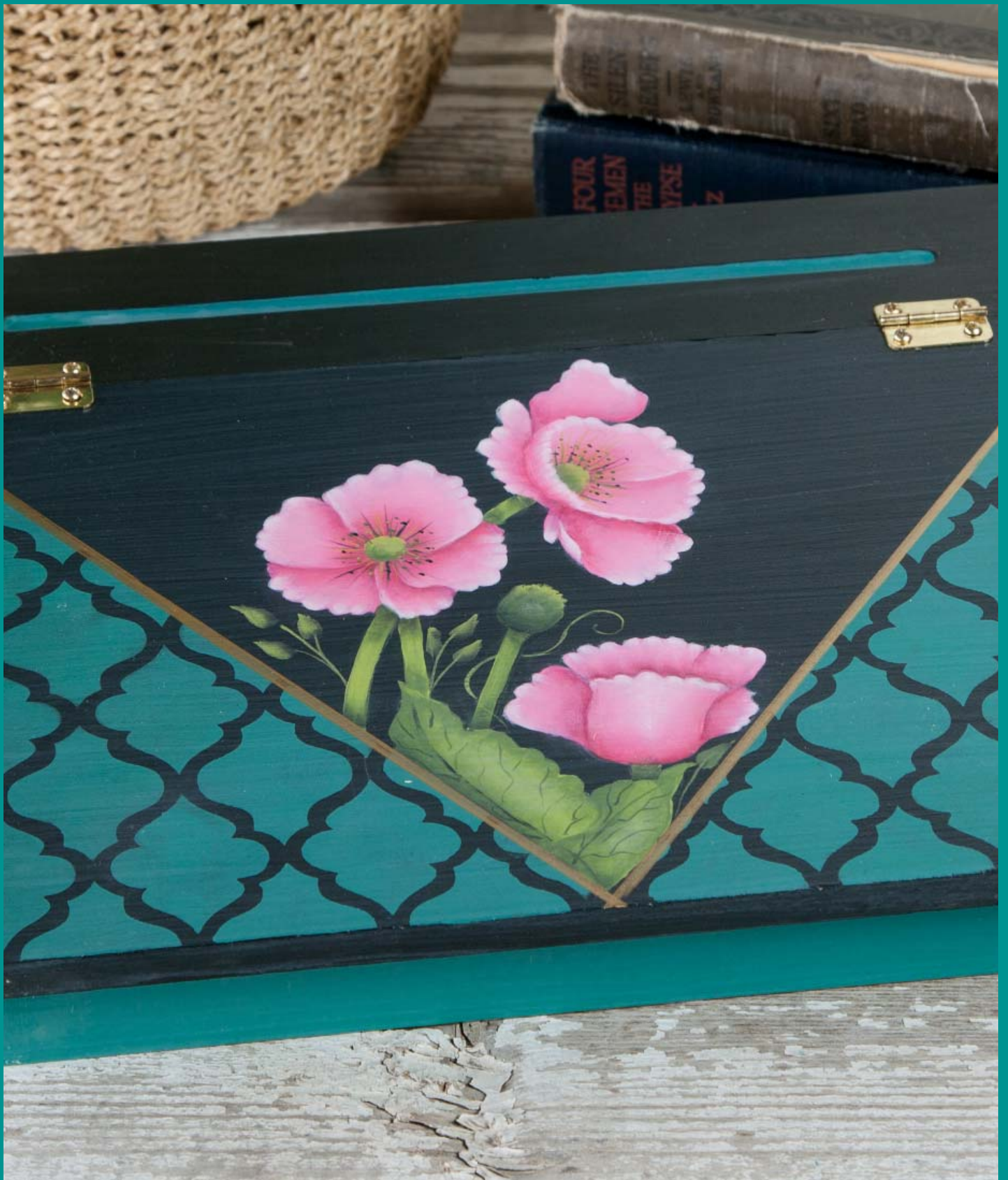
Pattern at 100%

1" x 1"

To ensure your pattern is at 100%, this box should measure 1" x 1" when printed.







Copyright 2017 by Margaret Wilson and Crafts Americana Group, Inc.
All Rights Reserved. #332086

No. 

© Artist's Club ®. All rights reserved. For private, non-commercial use only. Please see our web site for terms of use.